

Villa Rheinland II

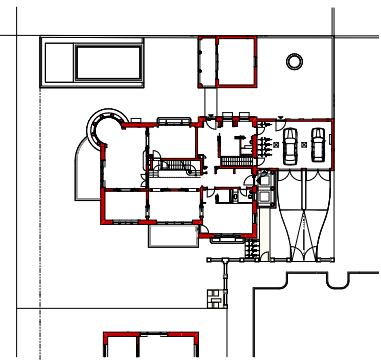
Client: Private
Project stages: 1 - 5
Time frame: 2011 - 2016
GFA: 988 sqm
Living space: 470 sqm
Site: Duesseldorf

Copyright: Nöfer Architekten | Maximilian Meisse



This private mansion is situated at the margins of a newly developed area bordered by a nature reserve to the north, elegant residential areas to the east and west, and a neighbourhood with smaller homes to the south. The building's orientation on the site ensures ideal lighting conditions and plenty of sun for the entrance, terrace, pool, and summer house. Light-coloured coarse rendering above a solid stone base of Istrian limestone contrasts with the dark window frames and doors. Deep eaves shelter the facade and minimise solar gain from the large windows.

The massive exterior walls are 55 cm thick and made of breathable material to ensure a pleasant climate in the high-ceilinged rooms all the year round. The aim was to build a house that meets the highest construction standards without appearing pretentious – a house that harmonises with the neighbourhood and translates the traditional idiom of stately homes and mansions into modern terms. Superb craftsmanship is evident in the integration of cutting-edge technical equipment in the interior, where it functions discreetly in the background.



Villa Rheinland II

Client: Private
Project stages: 1 - 5
Time frame: 2011 - 2016
GFA: 988 sqm
Living space: 470 sqm
Site: Duesseldorf

Copyright: Nöfer Architekten | Maximilian Meisse

