

ELLA Berlin Prenzlauer Berg

Client: Reggeborgh Investment u. Management GmbH,
Kondor Wessels Wohnen Berlin GmbH

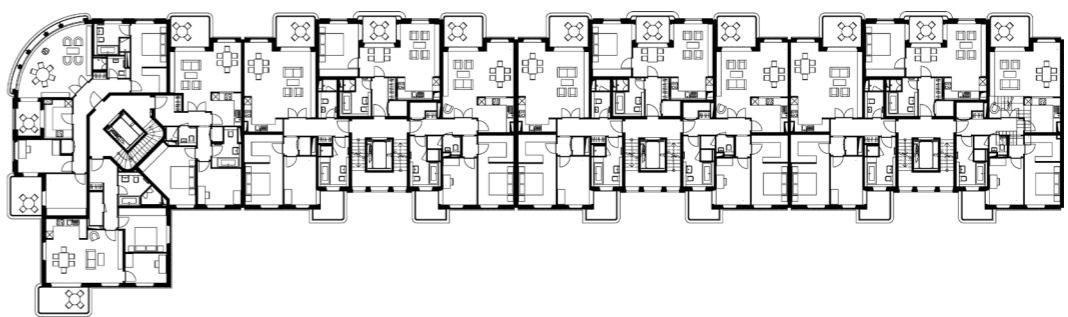
Project stages: 1 - 4

Time frame: 2012 - 2015

GFA: 11,200 sqm

Budget: 9,7 mio. Euro

Site: Fröbelstrasse / Ella-Kay-Strasse
10405 Berlin



Copyright: Nöfer Architekten | Maximilian Meisse

ELLA is privileged. The new residential building is situated in immediate vicinity to both the rolling lawns of Ernst-Thälmann-Park and the dense urban fabric that emerged south of Prenzlauer Berg's Danziger Straße at the end of the nineteenth century. ELLA's rounded corner on the intersection of Ella-Kay-Strasse and Fröbelstrasse is a nod to the crescent-shaped Prenzlauer Bogen across the street; together the two buildings define a unique urban space. Apart from Prenzlauer Bogen with its stucco fronts, another of ELLA's notable neighbours is the former hospital

designed by Hermann Blankenstein, a listed brick building. ELLA's facades combine the two materials, brick and stucco, to create a harmonious balance between sober red and radiant white surfaces. Inside the four terraced houses, premium materials and lighting enhance the lobbies' spacious elegance. The ground-floor residences have private gardens facing southeast and northwest, with loggias and balconies on the upper floors. The shared garden on the raised ground facing southeast features playgrounds and green spaces accessible to all residents.