

Hallesche Strasse Berlin Kreuzberg

Client: Kondor Wessels Wohnen Berlin GmbH,
Reggeborgh Projektentwicklung

Project stages: 1 - 4

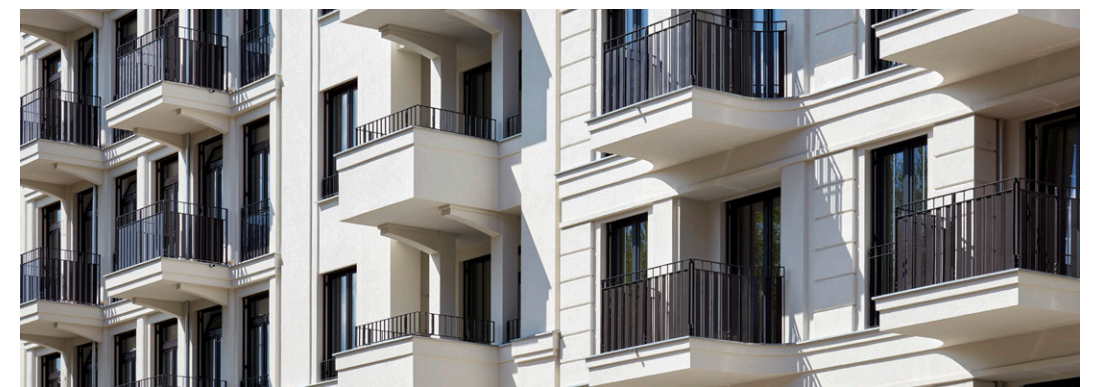
Time frame: 2013 - 2014

GFA: 16,000 sqm (Triade II)
7,600 sqm (Triade I)

Budget: 49,5 mio. Euro

Site: Hallesche Strasse 2–9
10963 Berlin Kreuzberg

Copyright: Nöfer Architekten



This residential development including twelve apartment buildings and a day care centre is situated in the immediate vicinity of Anhalter Bahnhof. The open, semi-public character of the complex goes back to a development plan drawn up in 1997. Reached by a shared access road, the site is criss-crossed by various paths linking it to the outside world. The development plan follows a stringent approach centred around six-storey residential wings and eight-storey tower houses with

bay windows and loggias which harmonize with the surrounding urban rhythm. Pilasters, string courses, and fascia clearly articulate the rendered facades rising above a two-storey “rusticated” base of light-yellow clinker brick. The buildings are grouped around a central courtyard designed to integrate a protected oak tree. The ensemble thus references the reform housing blocks of Early Modernism and their focus on attractive, well-tended shared garden areas.